

Connah's Quay Low Carbon Power

Environmental Statement Volume III Figure 8-33: FEED 2 Unabated Scenario, Nitrogen Deposition Process Contribution (Grassland)

Planning Inspectorate Reference: EN010166

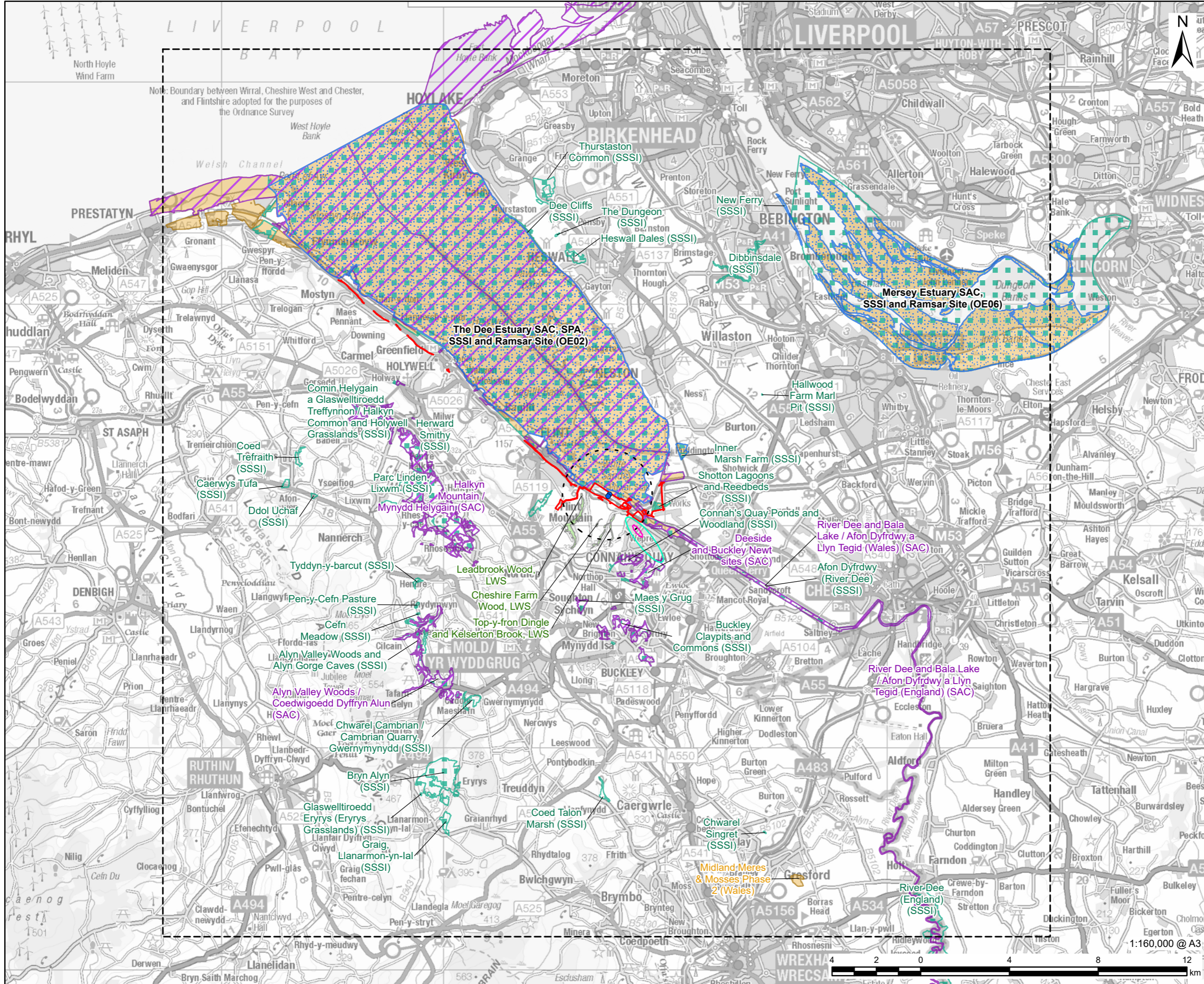
Document Reference: EN010166/APP/6.3

Planning Act 2008 (as amended)

Infrastructure Planning (Applications: Prescribed Forms and Procedure) Regulations
2009 - Regulation 5(2)(a)

Revision 00

March 2026



PROJECT
 Connah's Quay Low Carbon Power

CONSULTANT
 AECOM Limited
 The Colmore Building
 Colmore Circus, Queensway
 Birmingham, B4 6AT
 www.aecom.com

LEGEND

- Order limits
- Model Domain
- Feed 2 - Bypass Stack
- 2km Buffer of the Absorber Stack
- Location

Nitrogen Deposition Process Contribution (Grassland) (% of the CL)

- 1% of the 5 kgN/ha/yr Critical Load
- 1% of the 6 kgN/ha/yr Critical Load

Ecological Sites

- Special Protection Area (SPA)
- Special Area of Conservation (SAC)
- Site of Special Scientific Interest (SSSI)
- Ramsar
- Local Wildlife Site (LWS) [1]

NOTES

© Crown Copyright 2025. All rights reserved. Ordnance Survey Licence AC0000808122. Contains OS data © Crown copyright 2025. Contains Natural Resources Wales information © Natural Resources Wales and Database Right. All rights Reserved. Contains Ordnance Survey Data. Ordnance Survey Licence number AC0000849444. Crown Copyright and Database Right. © Natural England copyright. Contains Ordnance Survey data © Crown copyright and database right 2024. Records provided by Cofnod for Ecological Records Search Request. © North Wales Environmental Information Service. [1] Locally designated sites are only shown within 2km of the Absorber Stack Locations.

ISSUE PURPOSE
 Environmental Statement

DATE
 March 2026

PROJECT NUMBER
 60768754

FIGURE TITLE
 FEED 2 Unabated Scenario, Nitrogen Deposition Process Contribution (Grassland)

FIGURE NUMBER
 Figure 8-33